

Family Coaching & Mentorship (FCM)

FCM is a free, voluntary FRN program for Alberta families with children and youth birth to 18. We help families grow strong relationships, support children/youth's social and emotional development, and connect caregivers to helpful community resources.



The Youth Centre is part of the FRN offering support to youth 12 to 18. Visit their website for details.



All FRN services are voluntary & free.

The MFC office is located on Treaty 6 Territory and the Homeland of the Metis.



Office Hours

Tuesday to Thursday
9 AM to Noon | 1 PM to 4 PM

Friday
9 AM to Noon | 1 PM to 3 PM






Suite 103, 4910-50th Street
Lloydminster, SK
S9V 0Y5

Alberta Provincial Family Resource Networks



Contact

-  midwestfamilyconnections.ca
-  info@midwestfamilyconnections.ca
-  306-825-5911
1-866-651-5911

Family Resource Network

Lloydminster & County of Vermilion River

All Families Are Welcome

Family Resource Network (FRN) services focus on:

- child & youth development.
- parenting & family relationships.
- social connections & supports.

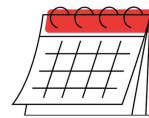
The Family Engagement Coordinator is a central point of coordination of FRN & community resources for parents and caregivers of children prenatally to 18 years of age. We help each family find the programs and services that are right for them.



Home Visitation

Home based program for families of children prenatally up to 6 years of age with priority for those with infants under 3 months of age. We help families facing challenges with parent-child relationships, positive parenting, healthy development and family wellness to connect with the supports they need. Goals are developed with each family based on the priorities that matter most to them.

Program Guide



Check our website for the current Program Guide. Evening and weekend hours are available.

Follow us on Facebook & Instagram. Call us to register or to let us know about ideas you have for programming.

→ Family Play & Learn

Explore & play together in the Indoor Playground and at rural outreach sites.

→ Child & Youth Development

Identify strengths and needs up to 18 years of age with developmental screening tools and resiliency measures.

→ Parenting Programs

Sessions offered in groups or 1-on-1 such as Triple P Positive Parenting, Kids Have Stress Too, Infant Massage, Circle of Security, Nobody's Perfect and Keep Connected.

→ Family Support

Groups and partnership programs such as Mothers First, Baby Bunch, and Coffee Talk sessions.

→ Information & Referral

We connect parents and caregivers with program information, tools and resources. If you have questions we can help you find answers!